

# Compliance Management

## BENEFITS

**Set up and maintain easily.** You can easily configure Audit Trails to track only the data required for your business and/or third-party add-ons. Audit Trails is designed for efficient ongoing maintenance and administration.

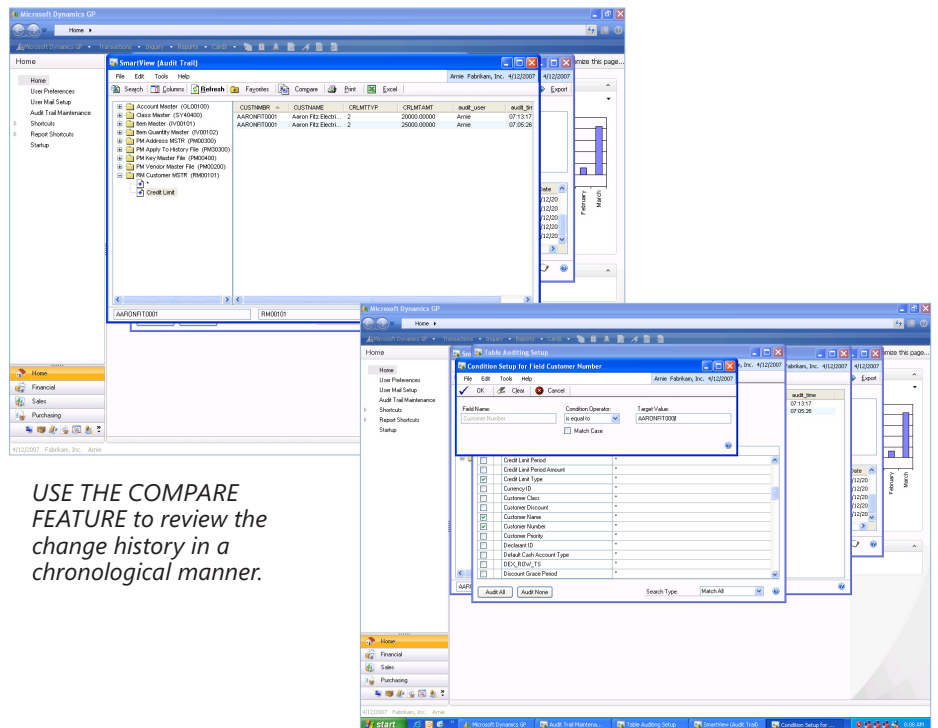
**Access information effortlessly.** SmartView has complete track and trace capabilities. It operates with closed-looped controls, or as a closed system, as required by many companies when using an audit trails system. The SmartView window—a SmartList-like user interface—provides easy access to the audit database.

**Maintain compliance.** Help adhere to the stringent data validation, security, and process integrity requirements mandated by the U.S. Food and Drug Administration (FDA), including the requirements specified in regulation 21 CFR Part 11.

## Audit Trails for Microsoft Dynamics GP

**Audit Trails for Microsoft Dynamics™ GP delivers strong tracking, tracing, and reporting capabilities that help ensure that your organization maintains regulatory compliance.**

Capture and archive changes to electronic data and documents required for maintaining regulatory compliance, including before-and-after transactional information, user ID, and time and date stamps.



*USE THE COMPARE FEATURE to review the change history in a chronological manner.*

*FIT AUDIT TRAILS to the exact controls required for your operations using Field Level audits and Conditional Auditing.*

## FEATURES

## AUDIT TRAILS

<b>Targeted Audit Trail Activation</b>	<p>Activate only those areas of the system that your organization requires—including production and security settings information—to keep the audit database uncluttered and a manageable size, and to enable easy reporting on the change history.</p>
<b>User- or User Group-Specific Audit Trail Report</b>	<p>SmartView provides a user-friendly report tool similar to Microsoft Dynamics GP SmartLists. Customize SmartView to generate employee-specific reports, so your staff can look at information as a whole or view change details using the Compare feature.</p>
<b>Audit Database Separate from Production Database</b>	<p>Store audit trails in a separate database from your software’s production database, so you can implement strong controls and procedures compliant with auditor requirements.</p>
<b>Time, Date, Microsoft Dynamics GP User ID Stamp</b>	<p>Meet regulatory requirements by reassembling the history of data changes, including the before and after data values associated with the change. Audit Trails enables you to comply with the stringent controls of many regulations, while easily reconstructing the change history of your significant processes.</p>
<b>Closed-Loop Environment</b>	<p>The fully integrated auditing solution supports regulatory requirements. The architecture of Audit Trails is designed to manage a large database of transaction information while operating as a closed system environment to ensure the integrity of the audit information.</p>
<b>Audit Changes Made Directly to the Database</b>	<p>Audit Trails captures changes made at both the application and database levels. If a fraud is perpetrated in the system, and data is changed directly through accessing the tables in the production Microsoft® SQL Server™ database, Audit Trails captures these changes.</p>
<b>Tracking of Conditional Audits</b>	<p>You can set an audit on fields and tables that are activated when any change occurs, or when pre-set conditions are met during a data change.</p>
<b>Full Microsoft Dynamics GP Product Benefits</b>	<p>Audit Trails is a fully tested, documented and supported solution from Microsoft. All planned upgrades are available, as well as robust support from the award-winning Microsoft Support Services Team.</p>

For more information about Audit Trails for Microsoft Dynamics GP, visit [www.microsoft.com/dynamics/gp](http://www.microsoft.com/dynamics/gp).